

Connectors for homeowner / D.I.Y. Projects.

**TTA12-TZ** – an angle connects two 1x wood members at 90° angles.

**TTA2-TZ** – an angle connects two 2x wood members at 90° angles.

**TTB22-TZ** – a bracket connects two intersecting 2x wood members at 90° angles.

**TTC24-TZ** – a corner tie connects 2x wood members at 90° to the corner of a 2x4 post. Mirror design allows for post to be oriented in either direction.

**TTC42-TZ** – a corner tie connects 2x wood members at 90° to the corner of a 4x4 post.

**TTF22-TZ** – a bracket connects 2x wood members to opposite sides of a 2x4 or 4x4 post.

**TTR-TZ** – a clip connects a 2x wood member to the face of another wood member.

**TTU2-TZ** – a U-clip connects 2x wood members crossing at 90°.

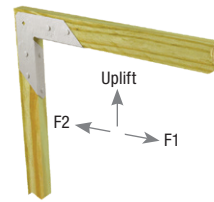
**Materials:** See chart

**Finish:** G-185 galvanizing

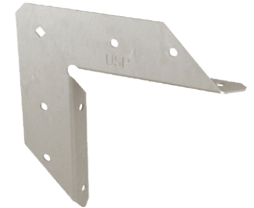
**Options:** See chart for Corrosion Finish Options

**Installation:**

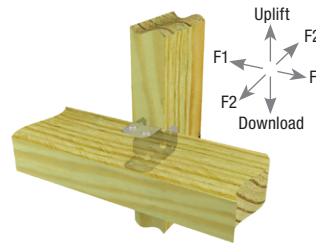
- Use all specified fasteners. See Product Notes, page 18.
- MiTek LumberLok LL915 (#9 x 1-3/8" long) wood screws are not supplied with connectors.



Typical TTA12-TZ installation



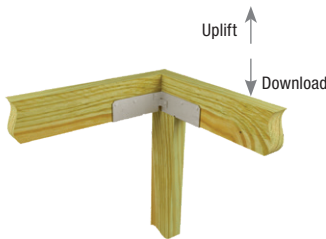
TTA12-TZ (TTA2-TZ Similar)



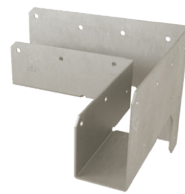
Typical TTB22-TZ installation



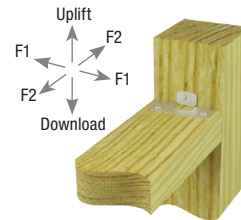
TTB22-TZ



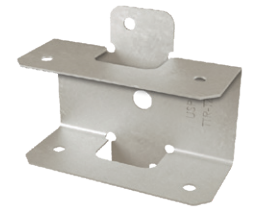
Typical TTC24-TZ installation



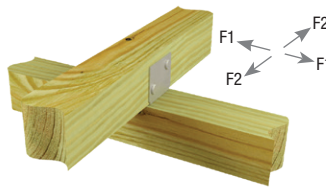
TTC24-TZ (TTC42-TZ Similar)



Typical TTR-TZ installation



TTR-TZ



Typical TTU2-TZ installation



TTU2-TZ



Typical TTF22-TZ installation



TTF22-TZ

MiTek USP Stock No.	Ref. No.	Steel Gauge	Post Size	Joist Size	Fastener Schedule <sup>1</sup>				DF/SP Allowable Loads (Lbs.) <sup>2,3</sup>				Corrosion Finish	Code Ref.
					Post		Joist (Total)		Download 100%	Uplift 100%	F1 100%	F2 100%		
					Qty	Type	Qty	Type						
TTA12-TZ	RTA12	18	1x	1x	4	LL915	4	LL915	--	205	190	205		
TTA2-TZ	RTA2Z	16	2x	2x	4	LL915	4	LL915	--	185	255	185		
TTU2-TZ	RTU2	18	2x	2x	2	LL915	4	LL915	--	--	210	210		
TTR-TZ	RTR	20	2x	2x	2	LL915	4	LL915	210	210	210	155		--
TTB22-TZ	RTB22	20	2x	2x	4	LL915	4	LL915	360	360	360	250		--
TTF22-TZ	RTF2Z	18	2 x 4	2x	4	LL915	8	LL915	420	265	--	--		
TTC24-TZ	RTC24Z	18	2 x 4	2x	9	LL915	8	LL915	475	415	--	--		
TTC42-TZ	RTC42, RTC4Z	18	4 x 4	2x	14	LL915	8	LL915	735	420	--	--		

1) LL915 denotes a LumberLok Screw, #9 x 1-3/8" long.  
 2) TTF22-TZ: Allowable loads must be equally distributed on both joists.  
 3) TTC24-TZ and TTC42-TZ: Allowable loads listed in this table are for each joist being carried by the post.

**Corrosion Finish**  
 ■ Stainless Steel ■ Gold Coat  
 ■ HDG ■ Triple Zinc